

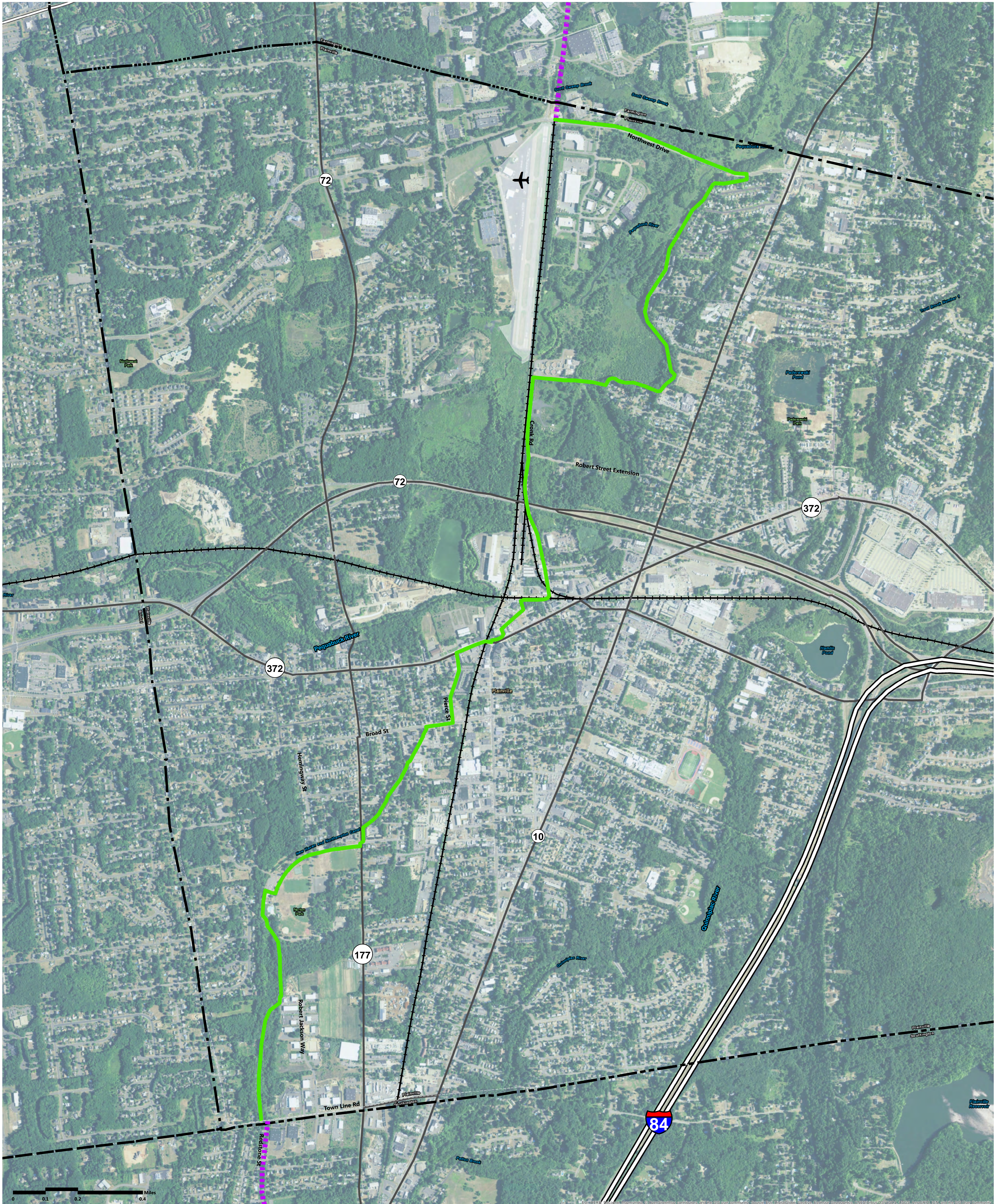
**Disclaimer:**  
The alignment shown is preliminary and for planning purposes only. Alignments are subject to change as the planning study progresses.

- Town Boundary
- Interstate
- U.S. Highway
- State Highway
- Active Rail
- Farmington Canal Heritage Trail, under construction/design
- Alignment A - 4.5 miles - 39% Off Road

**Gap Closure Study**

**Potential Alignment A**

Source Information:  
Map and Geographic Information Center - University of Connecticut, US Census Bureau



**Disclaimer:**  
The alignment shown is preliminary and for planning purposes only. Alignments are subject to change as the planning study progresses.

- Town Boundary
- Interstate
- U.S. Highway
- State Highway
- Active Rail
- Farmington Canal Heritage Trail, under construction/design
- Alignment B - 4.82 Miles - 91% Off Road


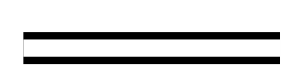


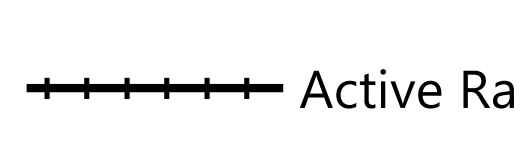


**Gap Closure Study**

**Potential Alignment B**

Source Information:  
Map and Geographic Information Center - University of Connecticut, US Census Bureau



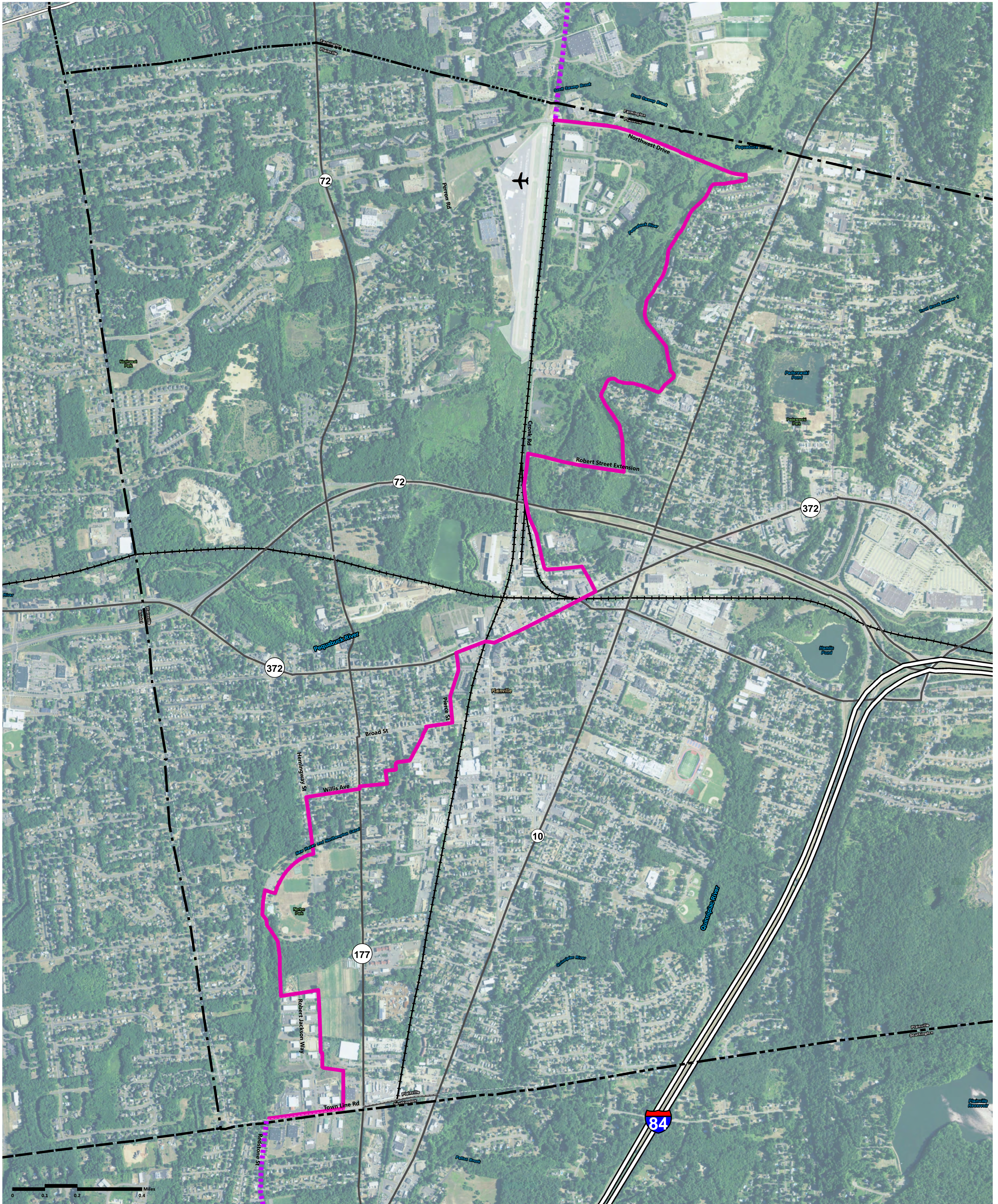
**Disclaimer:**  
The alignment shown is preliminary and for planning purposes only. Alignments are subject to change as the planning study progresses.

-  Town Boundary
-  Interstate
-  U.S. Highway
-  State Highway
-  Active Rail
-  Farmington Canal Heritage Trail, under construction/design
-  Alignment C - 4.75 Miles - 95% Off Road

**Gap Closure Study**

**Potential Alignment C**

Source Information:  
Map and Geographic Information Center -  
University of Connecticut, US Census Bureau



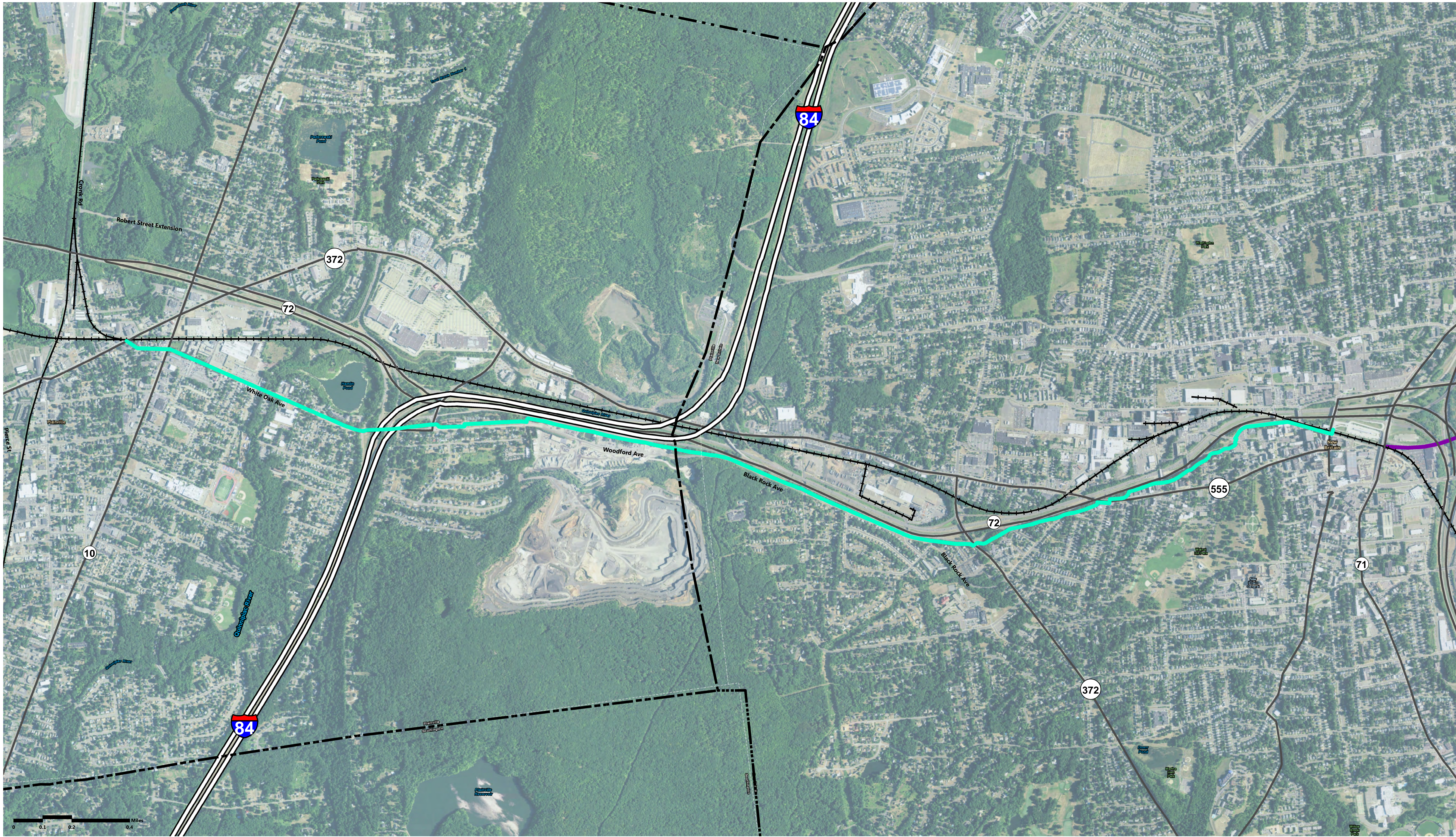
**Disclaimer:**  
The alignment shown is preliminary and for planning purposes only. Alignments are subject to change as the planning study progresses.

- Town Boundary
- Interstate
- U.S. Highway
- State Highway
- Farmington Canal Heritage Trail, under construction/design
- Alignment D - 5.63 miles - 84% Off Road
- Active Rail

**Gap Closure Study**

**Proposed Alignment D**

Source Information:  
Map and Geographic Information Center -  
University of Connecticut, US Census Bureau



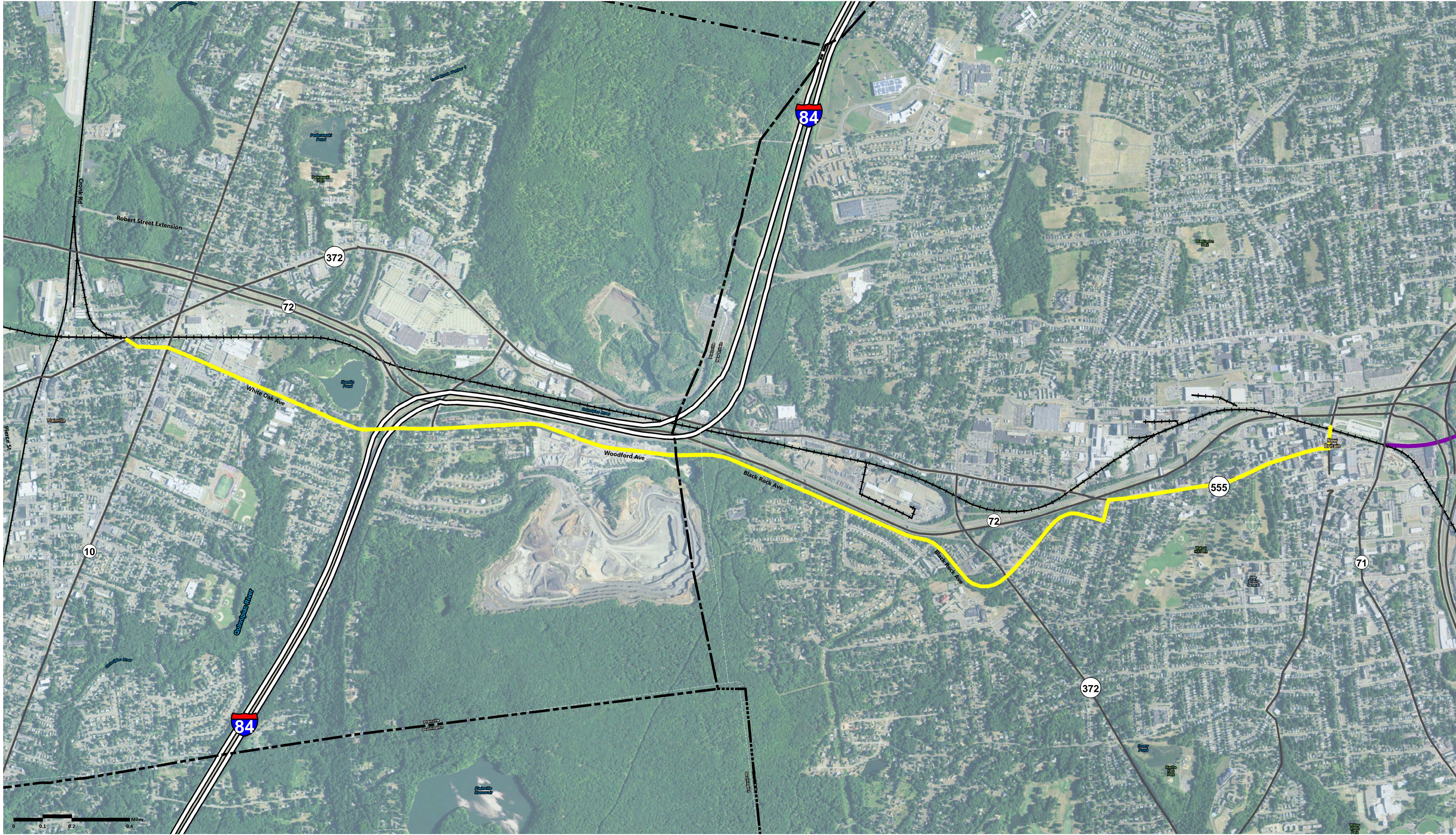
**Disclaimer:**  
The alignment shown is preliminary and for planning purposes only.  
Alignments are subject to change as the planning study progresses.

- Town Boundary
- Interstate
- U.S. Highway
- State Highway
- Active Rail
- Multi-use trail, Completed
- Alignment E - 4.49 Miles - 91.60% Off Road

**Gap Closure Study**

**Proposed Alignment E**


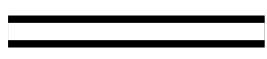


Source Information:  
Map and Geographic Information Center -  
University of Connecticut, US Census Bureau



**Disclaimer:**  
The alignment shown is preliminary and for planning purposes only.  
Alignments are subject to change as the planning study progresses.

**Gap Closure Study**

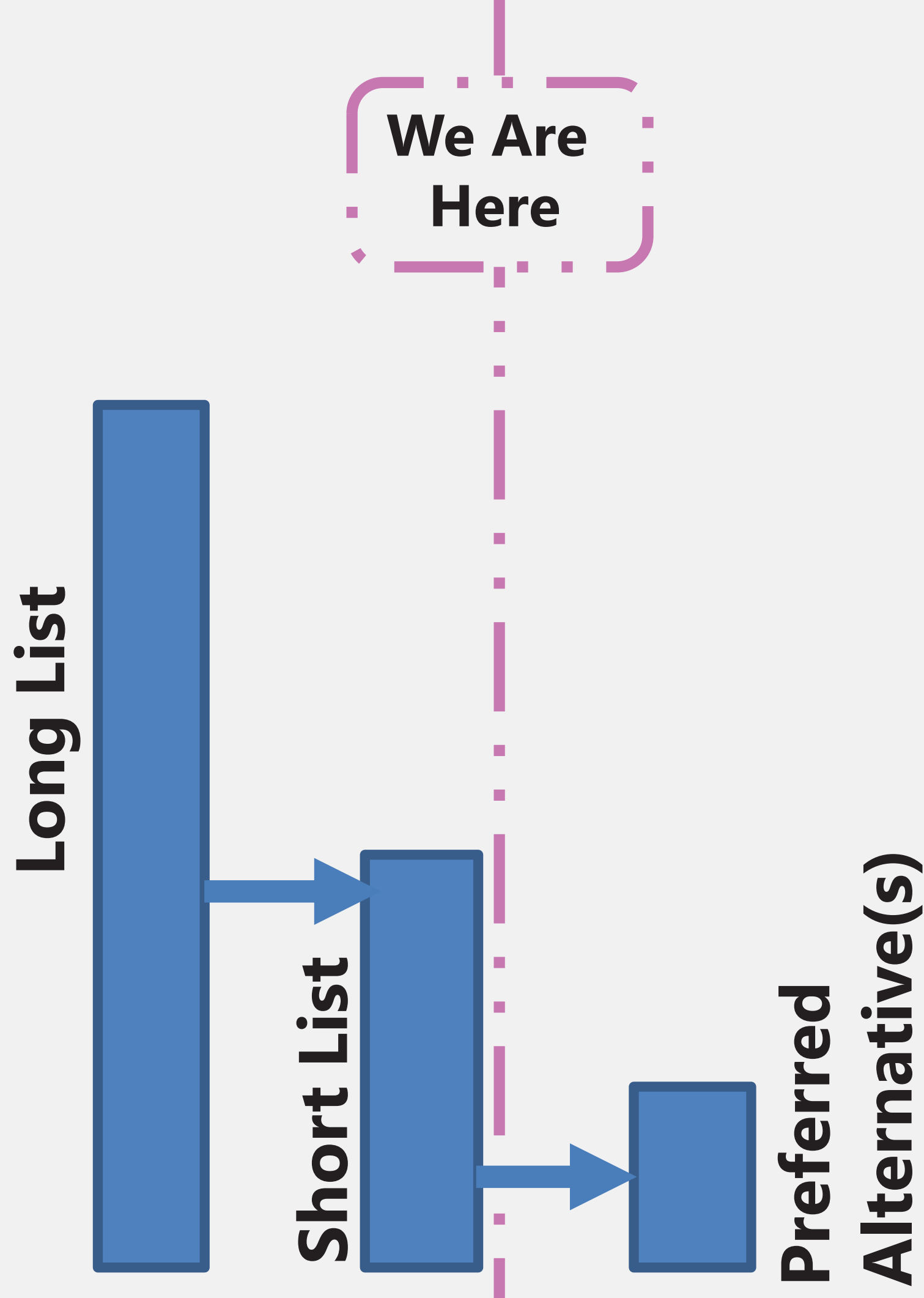
**Proposed Alignment F**

-  Town Boundary
-  Interstate
-  Active Rail
-  U.S. Highway
-  Multi-use trail, Completed
-  State Highway
-  Alignment F - 4.4 miles - 0% off-road

Source Information:  
Map and Geographic Information Center -  
University of Connecticut, US Census Bureau

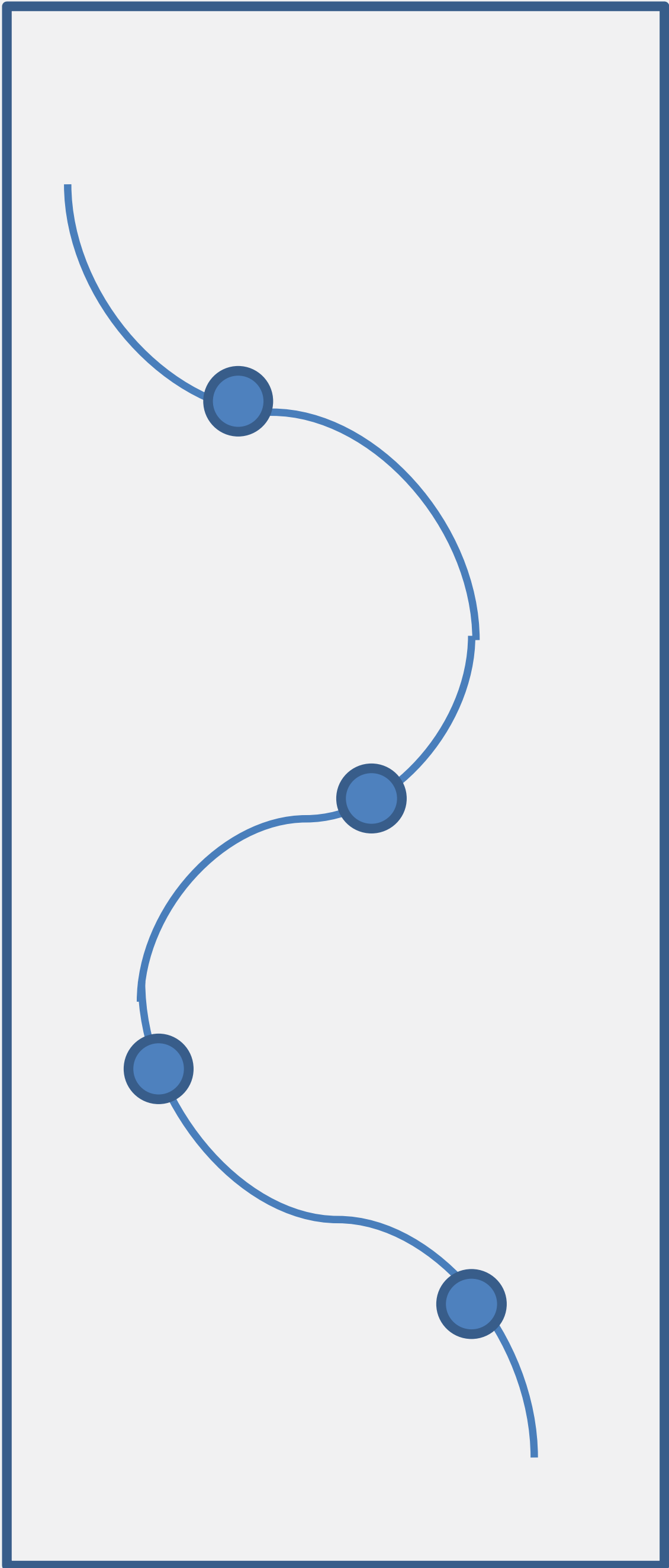
# Our Workplan

## Phase 1: Identify Alternative(s)



Spring 2017

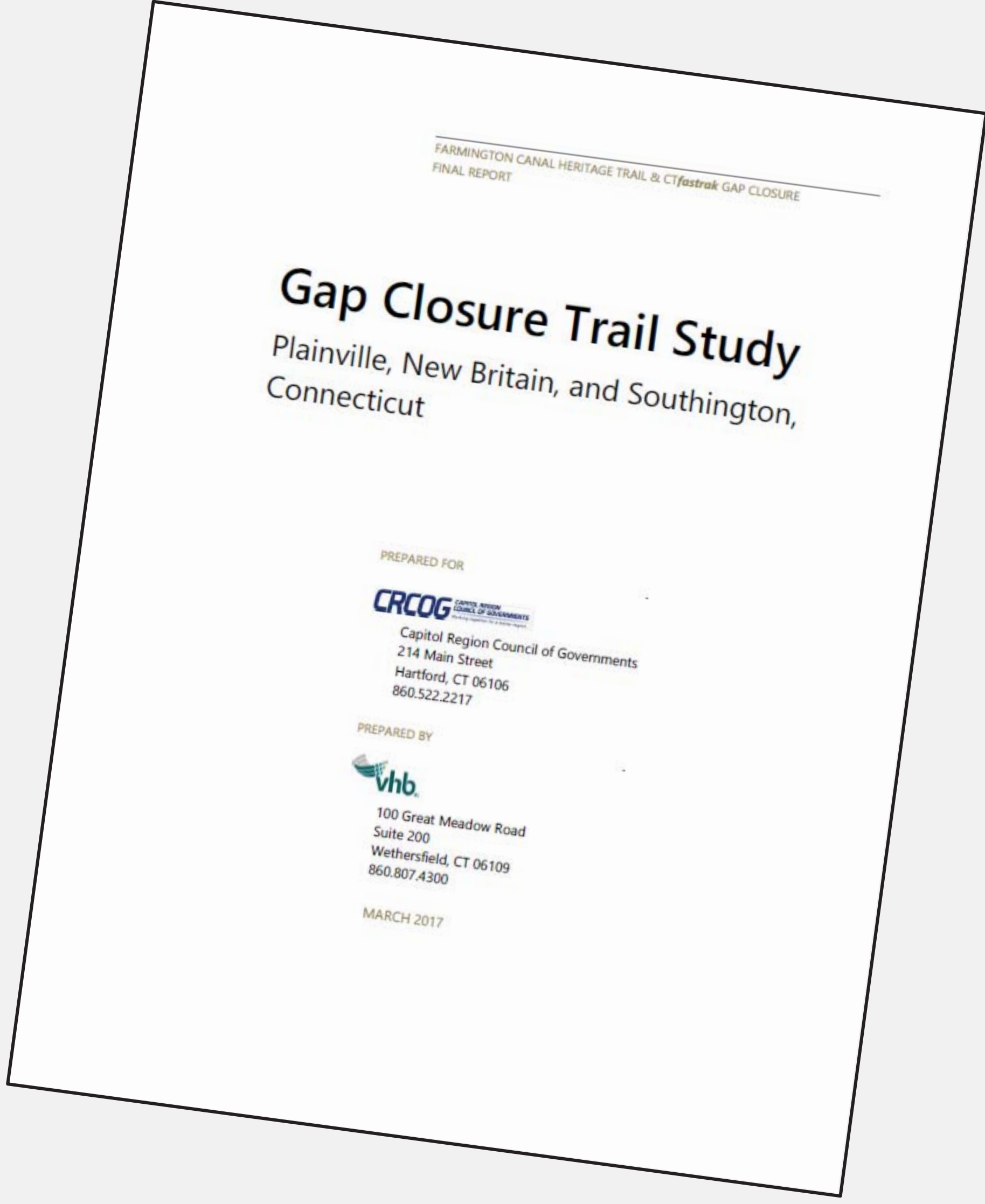
## Phase 2: Refine Alternative(s)



Alignment is for illustrative purposes only.

Summer 2017

## Phase 3: Prepare Concept Plan



Fall 2017

# Screening Criteria

Screening Criteria	Threshold
Connection with FCHT (Plainville)	North West Drive to Town Line Road
Connection with CTfastrak (New Britain)	CTfastrak station (New Britain)
Connection with downtown Plainville	Connects with Main Street) somewhere between Woodford Avenue and Rte 177
Major off-road element	More than 75% off-road
Avoids significant ROW impacts	Fewer than 30
Avoids undue reliance on Rail ROW	Avoids permanent impacts to Waterbury Branch and rail yard Fewer than three at-grade crossings of the Waterbury Branch
Avoids being overly circuitous	Not more than double straight-line distance





# Evaluation Criteria

Evaluation Criteria	Factors Considered
Connectivity	Connections to people and recreational resources
Safety	Speeds, crash history, number of driveways, and traffic volumes
Security	“Eyes on the trail” and access/egress options
Potential Property Impacts	Easements needed, ease of construction
Potential Environmental Impacts	Floodplains, wildlife habitat, hazardous materials, historic/cultural, and section 4f
Estimated Costs	Order of magnitude lifecycle costs

